

We Know the PMO

Keyedin Projects combines powerful portfolio management with unparalleled usability to provide the analytics you need to improve resource management, save time and money, and prioritize the most valuable projects and initiatives.

Maximize the Return From Your Project Portfolio

Whatever the size of your PMO, however many projects you are delivering, Keyedin Projects can help you increase your chances of success, reduce and manage risk across the entire project portfolio and keep costs under close control. Keyedin Projects has helped enterprise organizations across many industries achieve a:



15%
REDUCTION

in total
portfolio costs



25%
REDUCTION

in project
administration time

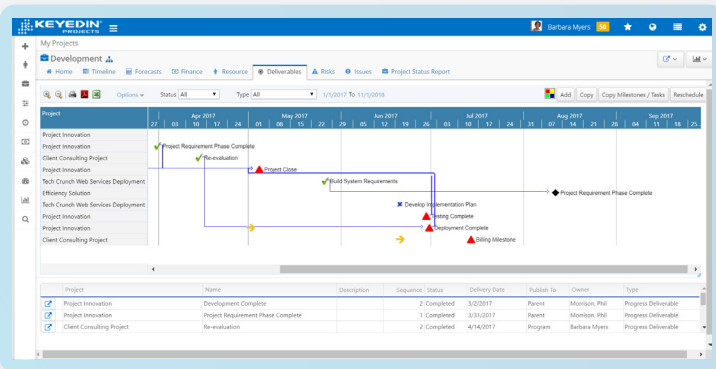


8%
INCREASE

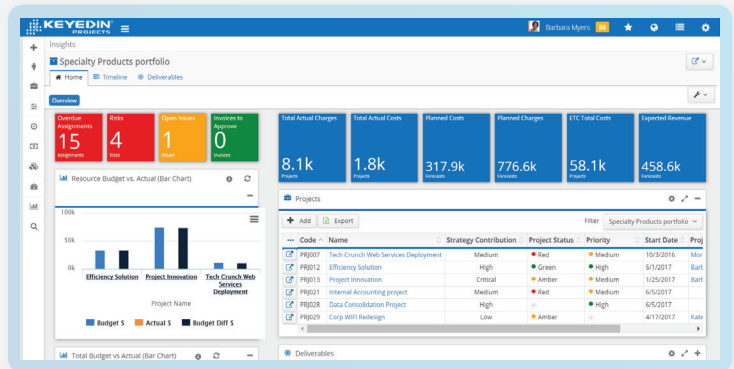
in on-time
project delivery

How KeyedIn Works

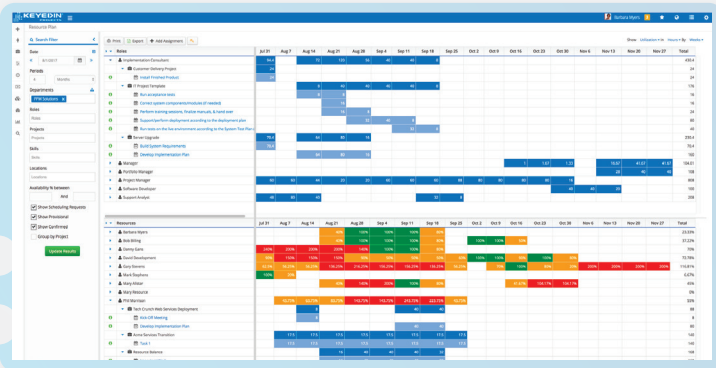
KeyedIn Projects works across the entire project lifecycle – from portfolio analysis and capacity planning to project execution and executive reporting – helping you to select, prioritize, deliver and analyze the projects that create the most value across your entire portfolio. This comprehensive approach results in reduced project overruns, labor cost savings, enhanced budget accuracy, lower employee turnover and a significant decrease in project and portfolio administration time.



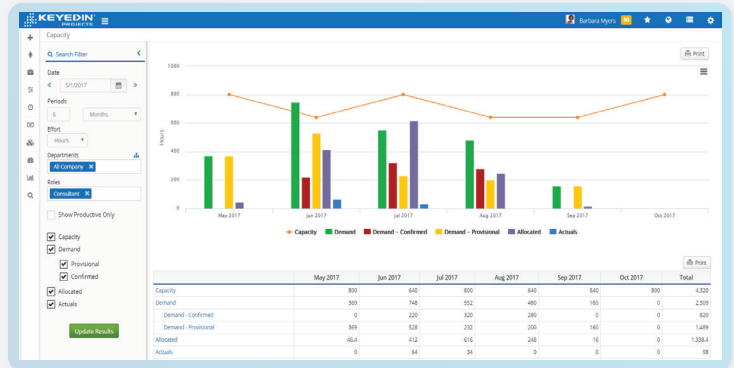
PROJECT PLANNING



PORTFOLIO MANAGEMENT



RESOURCE MANAGEMENT



CAPACITY PLANNING



"KeyedIn Projects is flexible enough to allow different standards and workflows to live side-by-side in the portfolio, and it was easy for users to adopt."

TONY MULLER
Group IT PMO Practice Lead



Walgreens Boots Alliance

"The solution has delivered much needed visibility over key project information. We now understand who has been working on what and how much it is costing. The system saves us a lot of time and allows us to make quick and accurate project decisions."

PMO DIRECTOR
Divisional IT



"Improved resource management has driven better efficiency across our organization."

DAVE SANDERS
VP of Operations and Reporting